



Bildaufösung 300 dpi



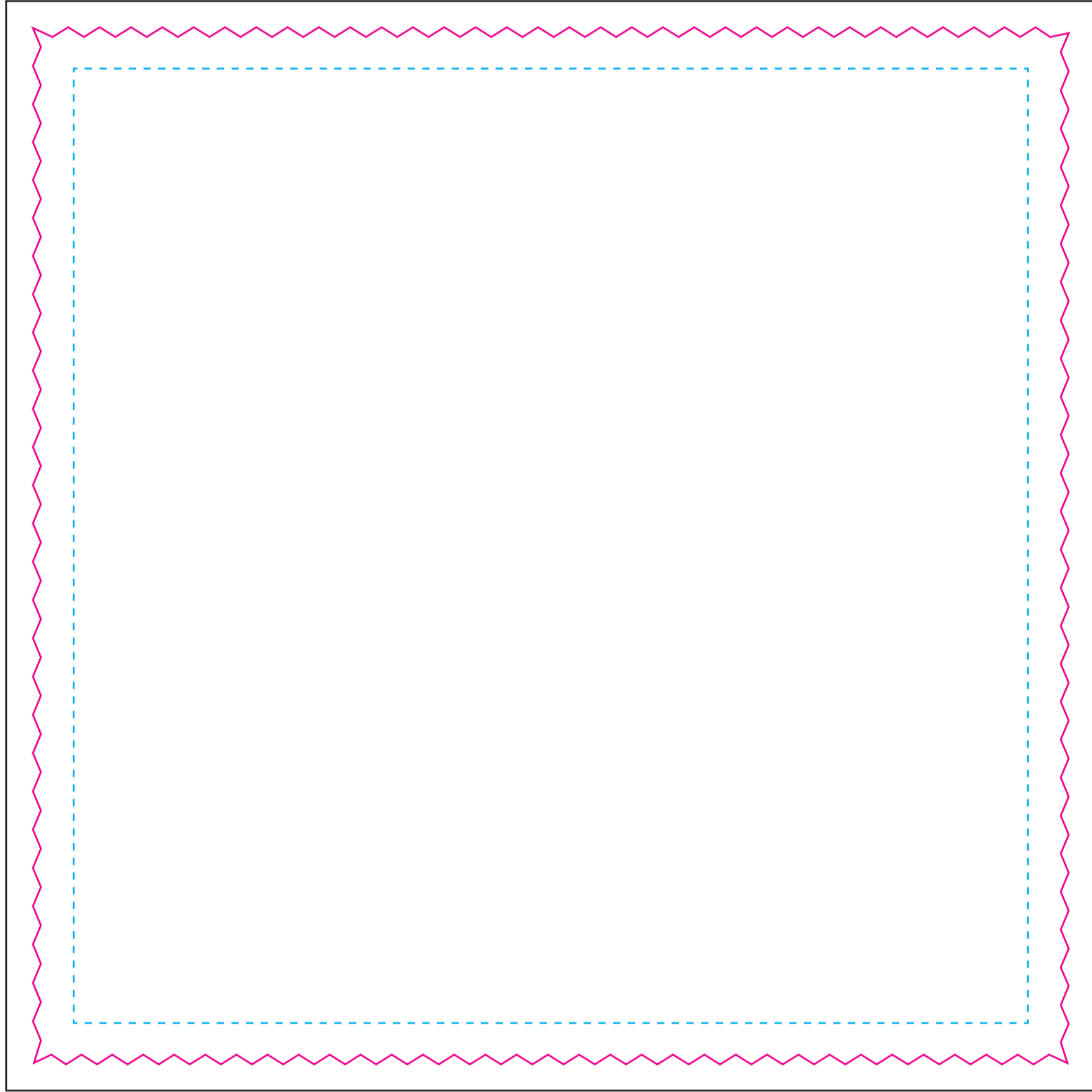
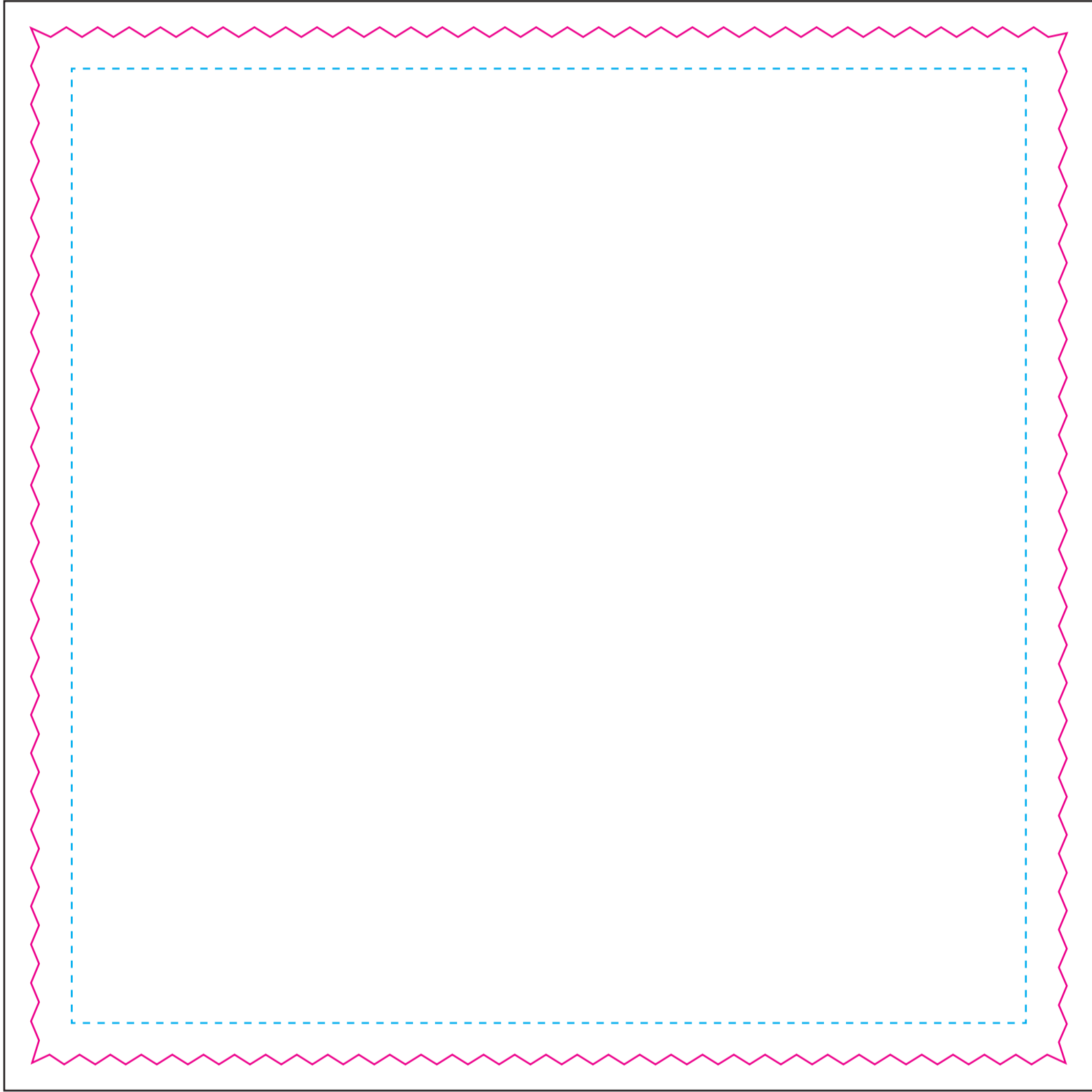
résolution des images 300 dpi



Pictures with 300 dpi

Vorderseite - Recto - Front




Rückseite - Verso - Back



INFO: - Bei diesem Artikel sind Größentoleranzen von +/-2 mm nicht auszuschließen.  
- Avec cet article, la tolérance de taille de +/- 2 mm est inévitable.  
- Size tolerances of +/-2 mm can not be excluded with this article.






Druckfläche:

-  Schnittkante: 200 x 200 mm
-  Beschnitt: 210 x 210 mm
-  Keine wichtigen Motivinhalte zwischen Schnittkante und dieser Linie ( 184 x 184 mm )






Surface de marquage:

-  Découpe: 200 x 200 mm
-  Débord: 210 x 210 mm
-  Pas de texte ou d'éléments important entre cette ligne et celle de découpe ( 184 x 184 mm )



Print area:

-  Cuttingline: 200 x 200 mm
-  Bleed: 210 x 210 mm
-  No important artwork parts between Cuttingline and this line ( 184 x 184 mm )